

SCHOOL DISTRICT U-46



May 19, 2025
Facilities Update for Board of Education

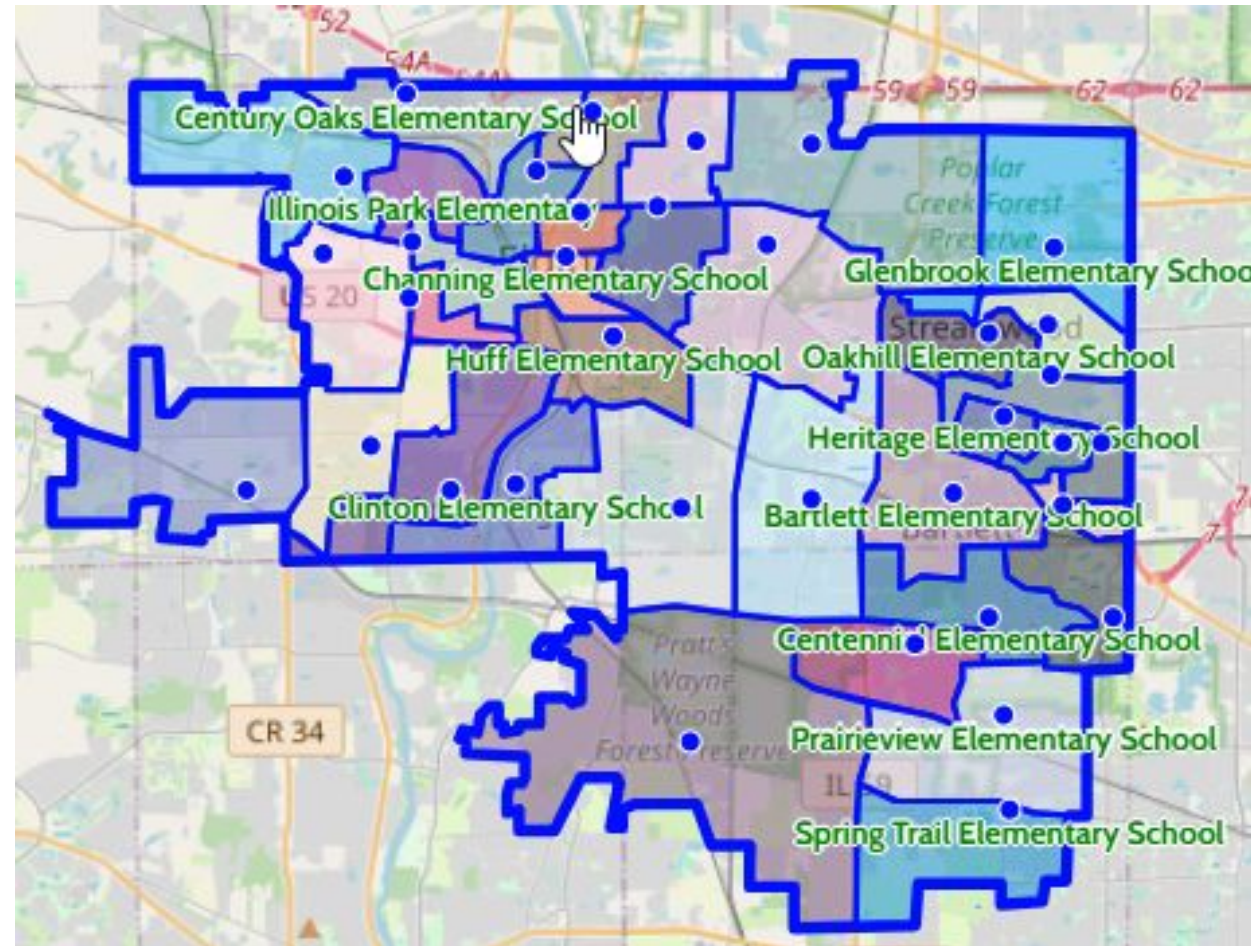
Tonight's Update

- **Construction Updates**

- Hawk Hollow
- Kenyon Woods
- Kimball
- New Elgin Middle School
- Glenbrook
- Century Oaks

- **Program Placement Update**

- **Parent informational sessions underway to address new boundaries**



SCHOOL DISTRICT U-46



Construction Updates

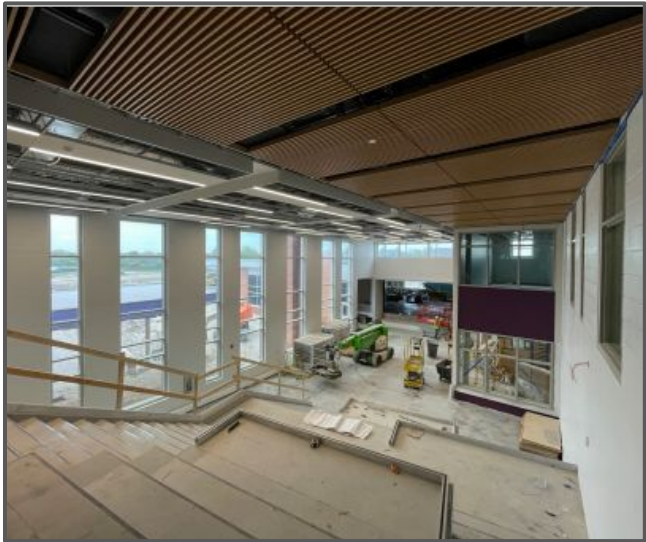
Groundbreaking Ceremonies



Hawk Hollow Middle School



Hawk Hollow Middle School



Kenyon Woods Middle School



Kenyon Woods Middle School



Kimball Middle School



Auditorium Stage Demo



StormTrap Excavation & Stone Base



Site Clearing



Geofoam under New Auditorium Floor Slab



Floor Leveling in Old Girls Locker Room

New Elgin Middle School



Ground Breaking



OH Protection



Tree Clearing



Tree Clearing



Tree Clearing

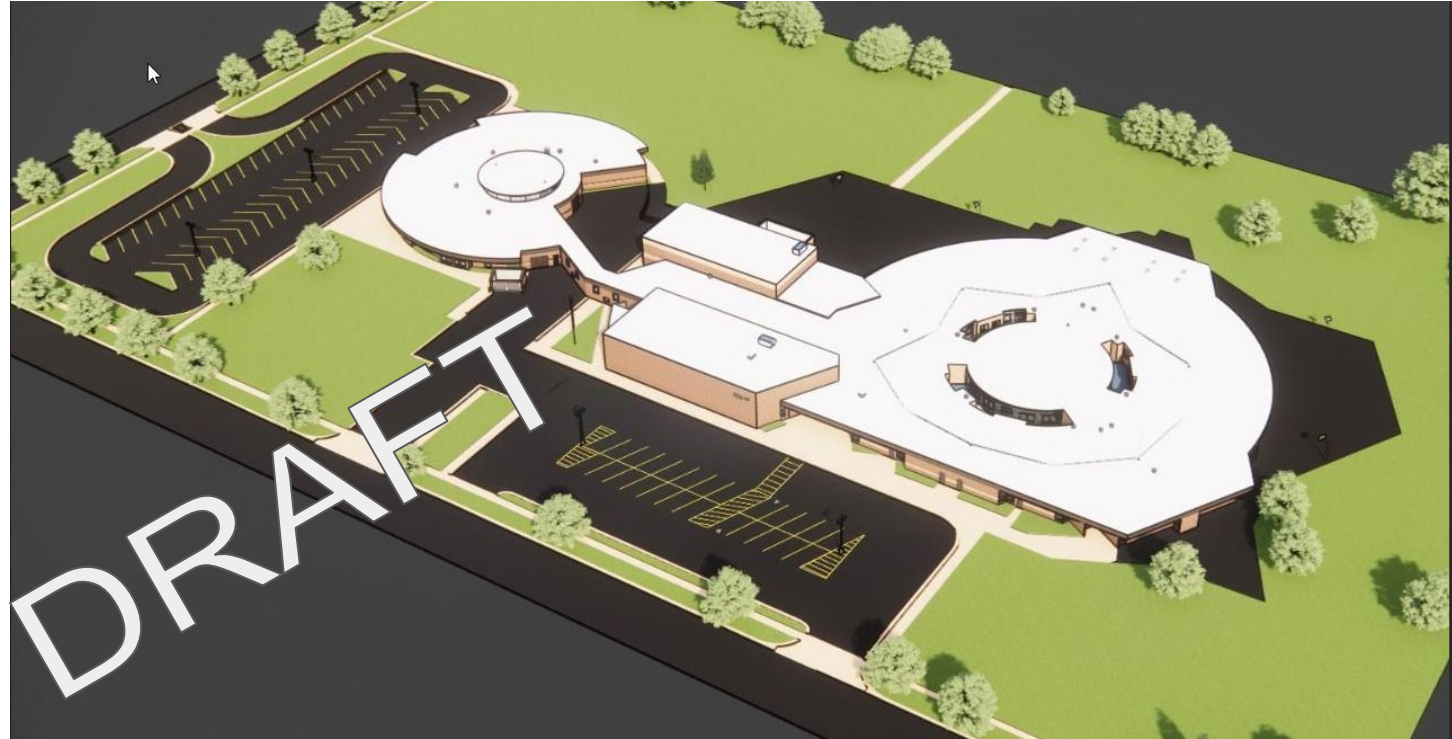


Visioning session with McKinley students



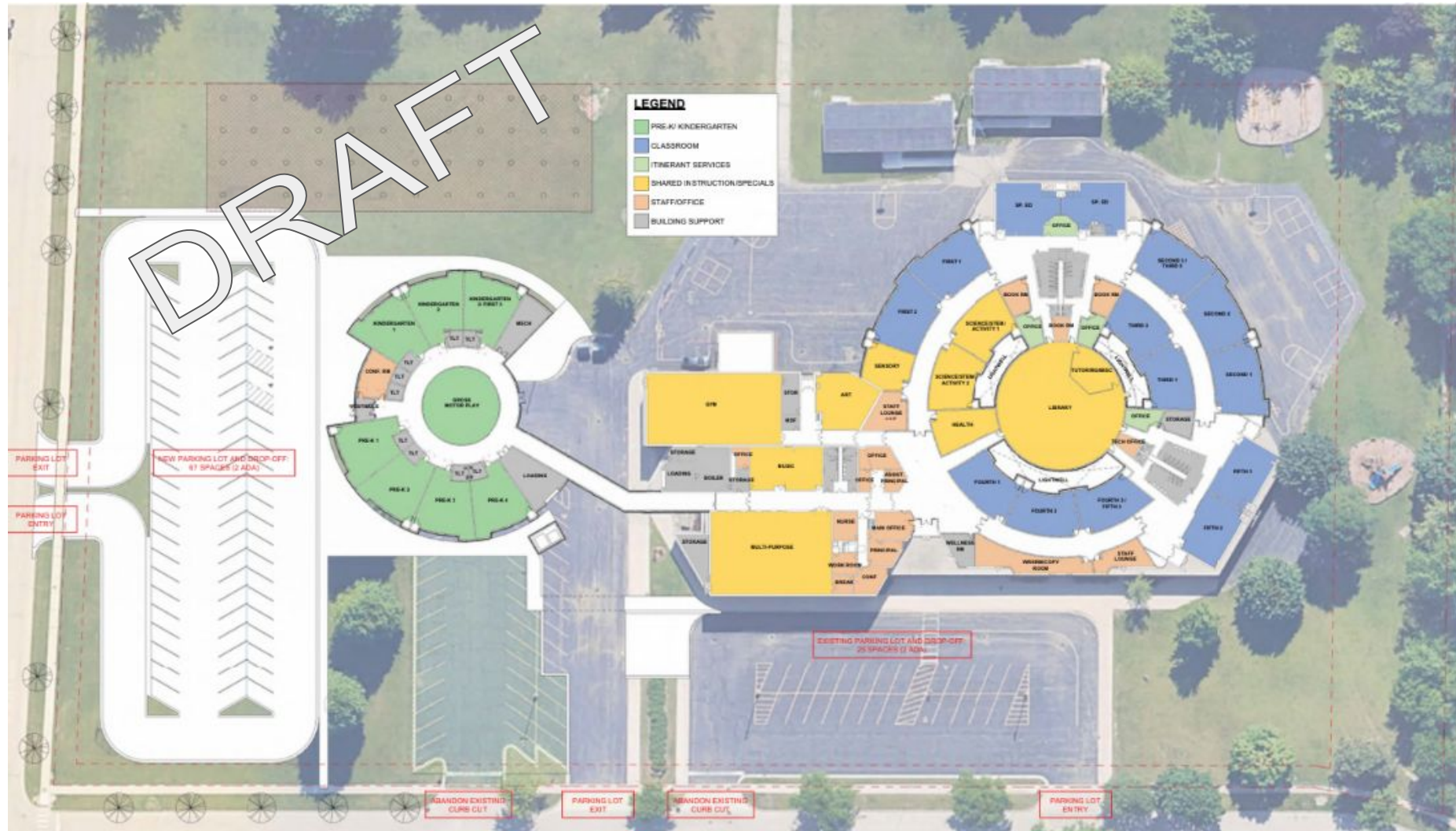
Century Oaks Elementary

- Nearing the end of the Design Development phase
- Approximately 18,000 ft² of additions and 33,000 ft² of renovations
- Site development discussions with City of Elgin are ongoing

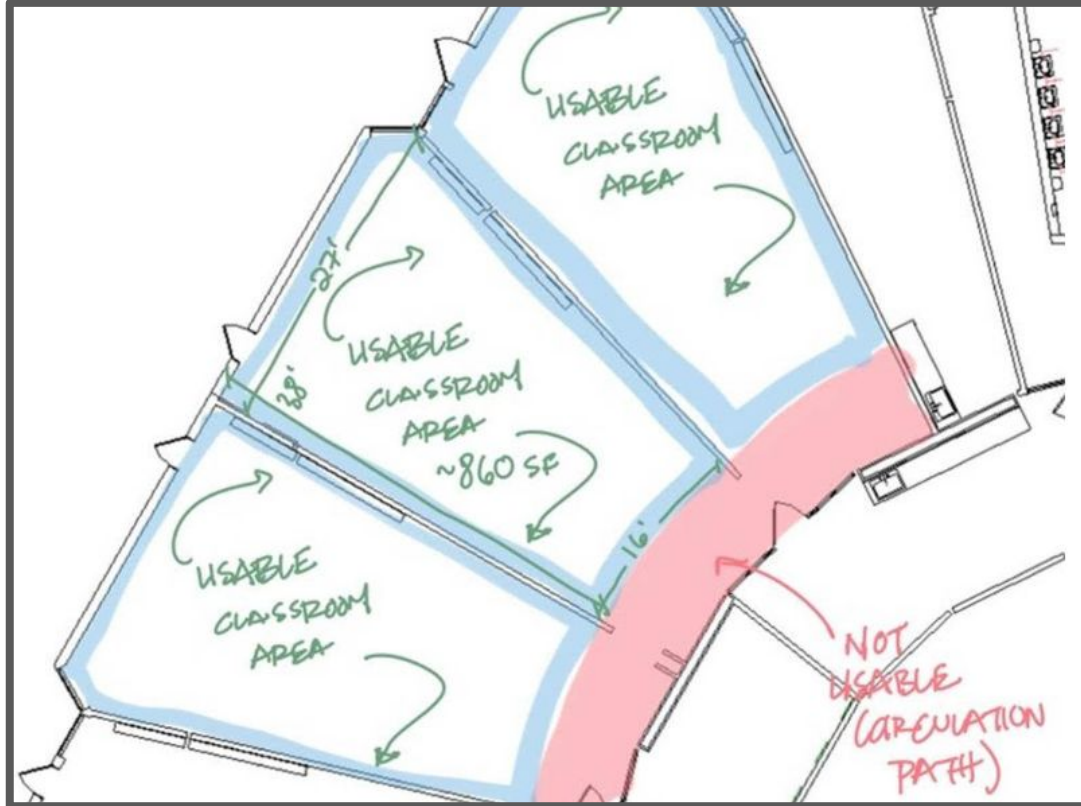


Century Oaks Elementary

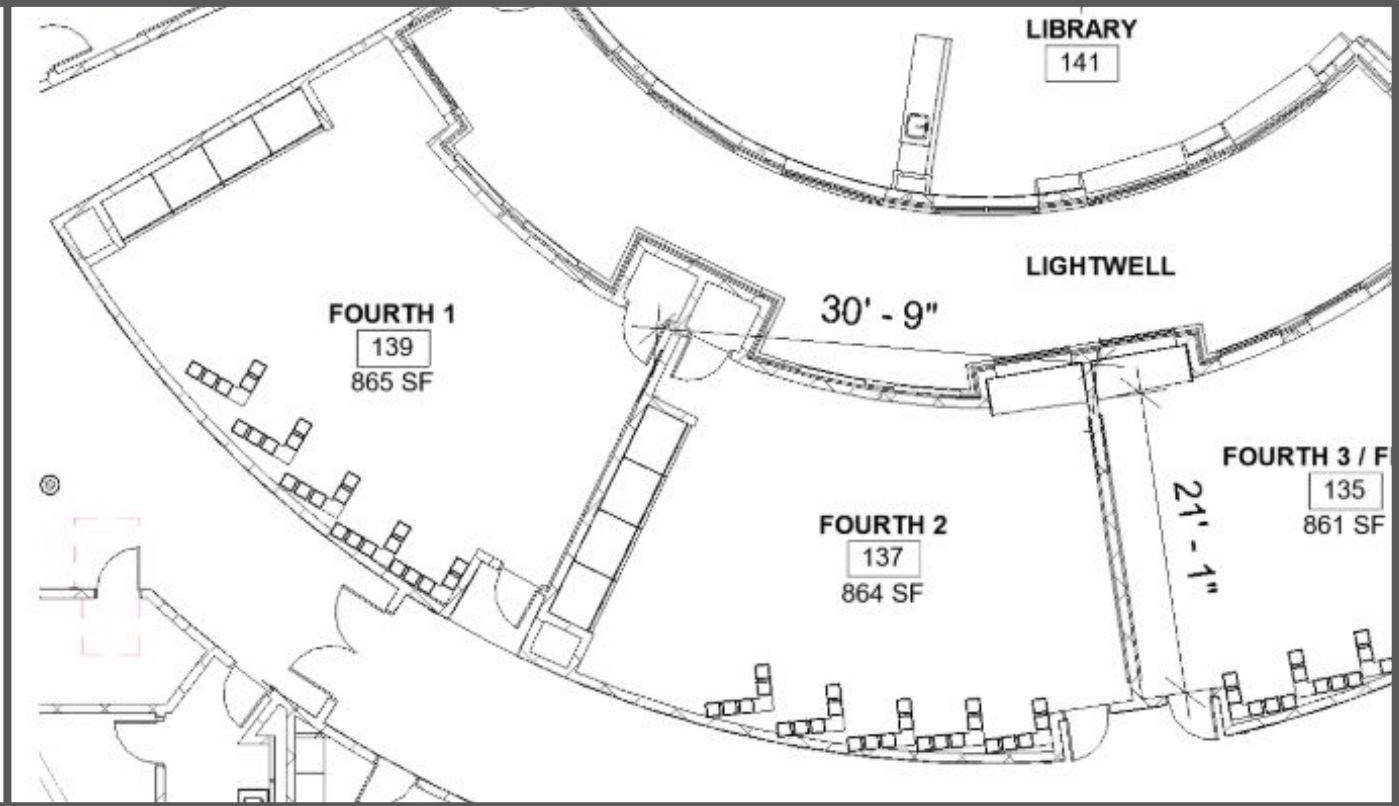
SCHOOL DISTRICT U-46



Century Oaks Elementary



Current Classrooms



Future Classrooms

Glenbrook Elementary

- Nearing the end of the Design Development phase
- Approximately 14,000 ft² of additions and 35,000 ft² of renovations
- Zoning discussions with Village of Streamwood are ongoing



Glenbrook Elementary

SCHOOL DISTRICT U-46

Unite46
Moving Forward Together



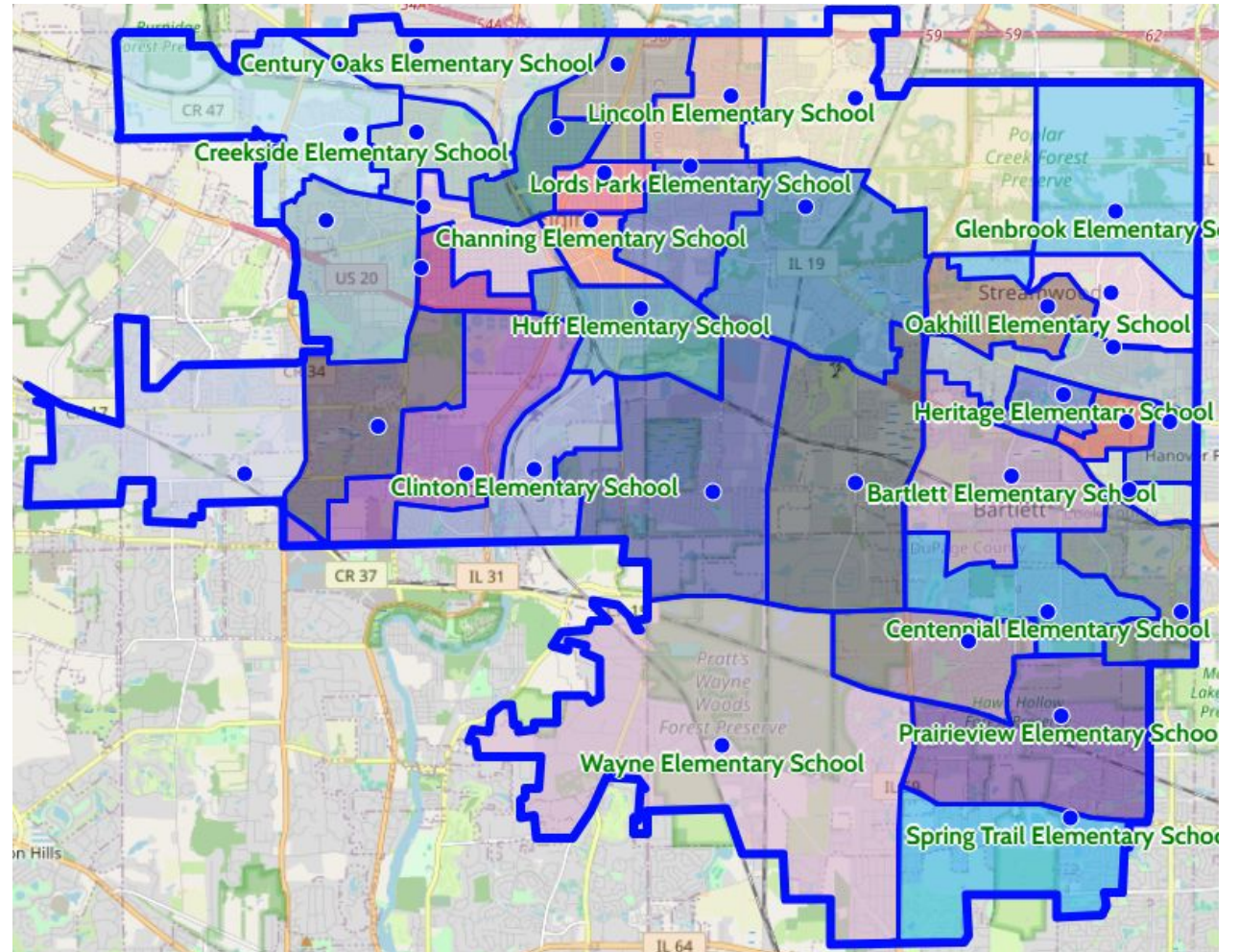
SCHOOL DISTRICT U-46



Program Placement Update

2026-2027 Program Placement Overview

- Program placements were determined based on student needs.
- Sites were selected to be geographically convenient, minimizing student transportation time.
- Support a smooth transition as new boundaries take effect.



Important Notes

- Program changes reflect boundary shifts effective 2026-2027.
- Some assignments will take place once building projects are complete (i.e. new Elgin elementary, new Elgin middle school).
- Pre-K classrooms pending available funding.



Glossary

Cross Cat ELL = Cross Categorical Instructional Program for English Language Learners

DL = Dual Language Program

DHH = Deaf and Hard of Hearing Program

EDIP = Emotional Development Instructional Program

EN = Exceptional Needs Program

ESL = English as a Second Language

IGNITE = Gifted Program

IIP = Intensive Instructional Needs Program

ILP = Instructional Learning Program

MLP = Modified Learning Program

Vision = Vision Impaired Resource Program

Bartlett Network

Centennial

Programs and Assigned Classrooms:

- ILP: 2
- Pre-K: 2 opening after 2026-2027
- DL Satellite: Heritage
- DL IGNITE Satellite: Ridge Circle
- IGNITE Satellite: Horizon
- ESL Satellite: Liberty

Ontarioville - Dual Language

Programs and Assigned Classrooms:

- ELL ILP: 2
- Pre-K: 2
- DL IGNITE Satellite: Ridge Circle
- IGNITE Satellite: Horizon
- ESL Satellite: Liberty

Horizon

Programs and Assigned Classrooms:

- DHH: 3 (including 1 pre-K)
- Pre-K: 2
- IGNITE: 2
- DL Satellite: Heritage
- DL IGNITE Satellite: Ridge Circle
- ESL Satellite: Liberty

Prairieview

Programs and Assigned Classrooms:

- Self-Contained: 0
- Pre-K: 2 opening after 2026-2027
- DL Satellite: Nature Ridge
- DL IGNITE Satellite: Ridge Circle
- IGNITE Satellite: Sycamore Trails
- ESL Satellite: Liberty

Laurel Hill - Dual Language

Programs and Assigned Classrooms:

- EDIP: 2
- Pre-K: 2
- DL IGNITE Satellite: Ridge Circle
- IGNITE Satellite: Horizon
- ESL Satellite: Liberty

Spring Trail

Programs and Assigned Classrooms:

- ILP: 2
- Pre-K: 2 opening after 2026-2027
- DL Satellite: Nature Ridge
- DL IGNITE Satellite: Ridge Circle
- IGNITE Satellite: Sycamore Trails
- ESL Satellite: Liberty

Bartlett Network

Sycamore Trails

Programs and Assigned Classrooms:

- MLP: 2
- Pre-K: 2
- IGNITE: 4
- DL Satellite: Heritage
- DL IGNITE Satellite: Ridge Circle
- ESL Satellite: Liberty

Wayne

Programs and Assigned Classrooms:

- EN 1: 2
- Pre-K: 2 opening after 2026-2027
- DL Satellite: Nature Ridge
- DL IGNITE Satellite: Ridge Circle
- IGNITE Satellite: Sycamore Trails
- ESL Satellite: Liberty

Highlights:

2 schools with Dual Language

2 schools with IGNITE

1 school with DHH

1 school with EDIP

1 school with EN1

3 schools with ILP

1 school with MLP

Elgin Network

Channing - Dual Language

Programs and Assigned Classrooms:

- MLP ELL: 2
- Pre-K: 2
- DL IGNITE Satellite: Huff
- IGNITE Satellite: Lincoln
- ESL Satellite: Timber Trails

Huff - Dual Language

Programs and Assigned Classrooms:

- EN 1: 2 (until new McKinley is built)
- Pre-K: 2
- DL IGNITE: 2
- IGNITE Satellite: Willard
- ESL Satellite: Timber Trails

Lords Park - Dual Language

Programs and Assigned Classrooms:

- Cross Cat ELL: 1
- Pre-K: 2
- DL IGNITE Satellite: Huff
- IGNITE Satellite: Lincoln
- ESL Satellite: Timber Trails

Coleman - Dual Language

- EN 1 ELL: 1
- Pre-K: 2
- DL IGNITE Satellite: Huff
- IGNITE Satellite: Lincoln
- ESL Satellite: Timber Trails

Lincoln - Dual Language

Programs and Assigned Classrooms:

- Cross Cat ELL: 1
- Pre-K: 2
- IGNITE: 2
- DL IGNITE Satellite: Huff
- ESL Satellite: Timber Trails

McKinley - Dual Language

Programs and Assigned Classrooms:

- EN 1: 2 (from Huff - once new building is complete)
- Pre-K: 3 (once new building is complete)
- DL IGNITE Satellite: Huff
- IGNITE Satellite: Lincoln
- ESL Satellite: Timber Trails

Elgin Network

Ron O'Neal - Dual Language

Programs and Assigned Classrooms:

- ILP ELL: 2
- Pre-K: 2
- DL IGNITE Satellite: Huff
- IGNITE Satellite: Lincoln
- ESL: Timber Trails

Timber Trails - ESL

Programs and Assigned Classrooms:

- ILP: 2
- Pre-K: 2
- DL Satellite: Hilltop
- DL IGNITE Satellite: Huff
- IGNITE Satellite: Lincoln

Highlights:

7 schools with Dual Language

1 school with ESL

2 schools with IGNITE

2 schools with Cross Categorical

2 schools with EN1

2 schools with ILP

1 school with MLP

Larkin Network

Century Oaks - Dual Language

Programs and Assigned Classrooms:

- EN 2: 2 (once renovations are complete)
- Pre-K: 4
- DL IGNITE Satellite: Huff
- IGNITE Satellite: Creekside
- ESL Satellite: Creekside

Creekside - Dual Language and ESL

Programs and Assigned Classrooms:

- EN 1: 2
- EN 2: 2 (until Century Oaks is complete)
- Pre-K: 4
- IGNITE: 2
- DL IGNITE Satellite: Huff

Harriet Gifford - Dual Language

Programs and Assigned Classrooms:

- ILP: 2
- Pre-K: 2
- DL IGNITE Satellite: Huff
- IGNITE Satellite: Creekside
- ESL Satellite: Creekside

Highland - Dual Language

Programs and Assigned Classrooms:

- Cross Cat ELL: 1
- MLP: 2
- Pre-K: 2
- DL IGNITE Satellite: Huff
- IGNITE Satellite: Creekside
- ESL Satellite: Creekside

Hillcrest - Dual Language

No specialized programs assigned.

- Self-Contained Special Education: 0
- Pre-K: 0
- DL IGNITE Satellite: Huff
- IGNITE Satellite: Creekside
- ESL Satellite: Creekside

Illinois Park - Dual Language

Programs and Assigned Classrooms:

- ILP ELL: 2
- Pre-K: 4
- DL IGNITE Satellite: Huff
- IGNITE Satellite: Creekside
- ESL Satellite: Creekside

Larkin Network

Highlights:

- 6 schools with Dual Language
- 1 school with ESL
- 1 school with IGNITE
- 1 school with Cross Categorical
- 1 school with EN1
- 2 schools with EN2
- 2 schools with ILP
- 1 school with MLP



South Elgin Network

Bartlett

Programs and Assigned Classrooms:

- IIP: 2
- Pre-K: 0
- DL Satellite: Heritage
- DL IGNITE Satellite: Ridge Circle
- IGNITE Satellite: Horizon
- ESL Satellite: Liberty

Clinton

Programs and Assigned Classrooms:

- EDIP: 2
- Pre-K: 2
- Dual Language Satellite: Otter Creek
- DL IGNITE Satellite: Huff
- IGNITE Satellite: Willard
- ESL Satellite: Liberty

Fox Meadow

Programs and Assigned Classrooms:

- IIP: 2
- Pre-K: 2
- DL Satellite: Otter Creek
- DL IGNITE Satellite: Huff
- IGNITE Satellite: Willard
- ESL Satellite: Creekside

Liberty - ESL

Programs and Assigned Classrooms:

- EN II: 1
- ILP: 2
- Pre-K: 2
- DL Satellite: Nature Ridge
- DL IGNITE Satellite: Ridge Circle
- IGNITE Satellite: Sycamore Trails

Nature Ridge - Dual Language

Programs and Assigned Classrooms:

- ILP: 1
- Pre-K: 2 opening after 2026-2027
- DL IGNITE Satellite: Huff
- IGNITE Satellite: Willard
- ESL Satellite: Liberty

Otter Creek - Dual Language

Programs and Assigned Classrooms:

- MLP: 2
- Pre-K: 2
- DL IGNITE Satellite: Huff
- IGNITE Satellite: Creekside
- ESL Satellite: Creekside

South Elgin Network

Willard

Programs and Assigned Classrooms:

- Self-Contained Special Education: 0
- Pre-K: 2
- IGNITE: 2
- DL Satellite: Otter Creek
- DL IGNITE Satellite: Huff
- ESL Satellite: Creekside



Highlights:

2 schools with Dual Language

1 school with ESL

1 schools with IGNITE

1 school with EDIP

1 school with EN2

2 schools with IIP

2 schools with ILP

1 school with MLP

Streamwood Network

Glenbrook - Dual Language

Programs and Assigned Classrooms:

- ILP: 2
- Pre-K: 2
- DL IGNITE Satellite: Ridge Circle
- IGNITE Satellite: Sunnydale
- ESL Satellite: Timber Trails

Hilltop - Dual Language

Programs and Assigned Classrooms:

- ILP: 2
- Pre-K: 3
- DL IGNITE Satellite: Ridge Circle
- IGNITE Satellite: Lincoln
- ESL Satellite: Timber Trails

Parkwood - Dual Language

Programs and Assigned Classrooms:

- ILP: 2
- Pre-K: 2
- DL IGNITE Satellite: Ridge Circle
- IGNITE Satellite: Sunnydale
- ESL Satellite: Timber Trails

Heritage - Dual Language

Programs and Assigned Classrooms:

- Cross Cat ELL: 1
- MLP: 1
- Pre-K: 2
- DL IGNITE Satellite: Ridge Circle
- IGNITE Satellite: Sunnydale
- ESL Satellite: Timber Trails

Oakhill - Dual Language

Programs and Assigned Classrooms:

- MLP ELL: 3
- Pre-K: 2
- DL IGNITE Satellite: Ridge Circle
- IGNITE Satellite: Sunnydale
- ESL Satellite: Timber Trails

Ridge Circle - Dual Language

Programs and Assigned Classrooms:

- Cross Cat ELL: 1
- ILP: 2
- Pre-K: 2
- DL IGNITE Satellite: 2
- IGNITE Satellite: Sunnydale
- ESL Satellite: Timber Trails

Streamwood Network

Sunnydale - Dual Language

Programs and Assigned Classrooms:

- ILP ELL: 2
- Pre-K: 2
- IGNITE Satellite: 2
- DL IGNITE Satellite: Ridge Circle
- ESL Satellite: Timber Trails



Highlights:

7 schools with Dual Language

2 schools with IGNITE

2 schools with Cross Categorical

1 school with EN2

5 schools with ILP

2 schools with MLP

Middle School Network

Canton- Dual Language

Programs and Assigned Classrooms:

- EN I: 1
- EN II: 1 (until New MS is complete)
- ILP: 1
- MLP: 1

Kenyon Woods - Dual Language

Programs and Assigned Classrooms:

- DHH: 1
- ILP: 1
- MLP: 1

New MS (Elgin) - Dual Language

Programs and Assigned Classrooms:

- EN II: 1
- ILP: 1
- MLP: 1

Eastview

Programs and Assigned Classrooms:

- ILP: 1
- MLP: 1
- Dual Language Satellite: Tefft

Kimball - Dual Language

Programs and Assigned Classrooms:

- ILP: 1
- MLP: 1

Tefft - Dual Language

Programs and Assigned Classrooms:

- EDIP: 1
- ILP: 1
- MLP: 1

Hawk Hollow

Programs and Assigned Classrooms:

- ILP: 1
- MLP: 1
- Dual Language Satellite: Tefft

Larsen - Dual Language

Programs and Assigned Classrooms:

- ILP: 1
- MLP: 1
- Vision: 1

*Abbott and Ellis

Will continue with current programming until 8th grade is phased out.

***All middle schools will continue to offer gifted and accelerated programming.

Middle School Network

Highlights:

All middle schools will offer ILP and MLP programming to allow as many students as possible to attend their home schools.

All middle schools will continue to offer gifted and accelerated programming.

We are expanding Dual Language programming to Kenyon Woods and Canton Middle Schools.



Residency Exception Update

- Requests for the 2025-2026 school year were due on May 15, 2025.
- Committee met last Friday and approved 75 of 117 valid requests
 - Families and schools will receive notification this week
- Communication regarding requests for the 2026-2027 school year will be sent to families in the fall.

Informational Sessions to Explain New Attendance Boundaries



Next Steps

- Holding informational sessions in all impacted schools.
- Plan systemwide transition events across U-46 sites.

WE'RE ON THE MOVE

Stop on by for an interactive presentation to hear all about our next big steps forward and what exciting experiences and learning await your child after Lowrie Elementary School closes its doors and retires in June 2026!

LOWRIE ELEMENTARY



4:30 P.M. - WEDNESDAY, MAY 7
LOWRIE ELEMENTARY SCHOOL LIBRARY
264 OAK STREET, ELGIN

KEEP PACE WITH THE TIMELINE, TRANSPORTATION OPTIONS, AND NEW OPPORTUNITIES, AND LEARN HOW TO **JUMPSTART YOUR MOVE!**

Have questions? Submit them by May 6 through the [Let's Talk system](#) as questions will be addressed during the presentation.

SCHOOL DISTRICT U-46



Thank You!