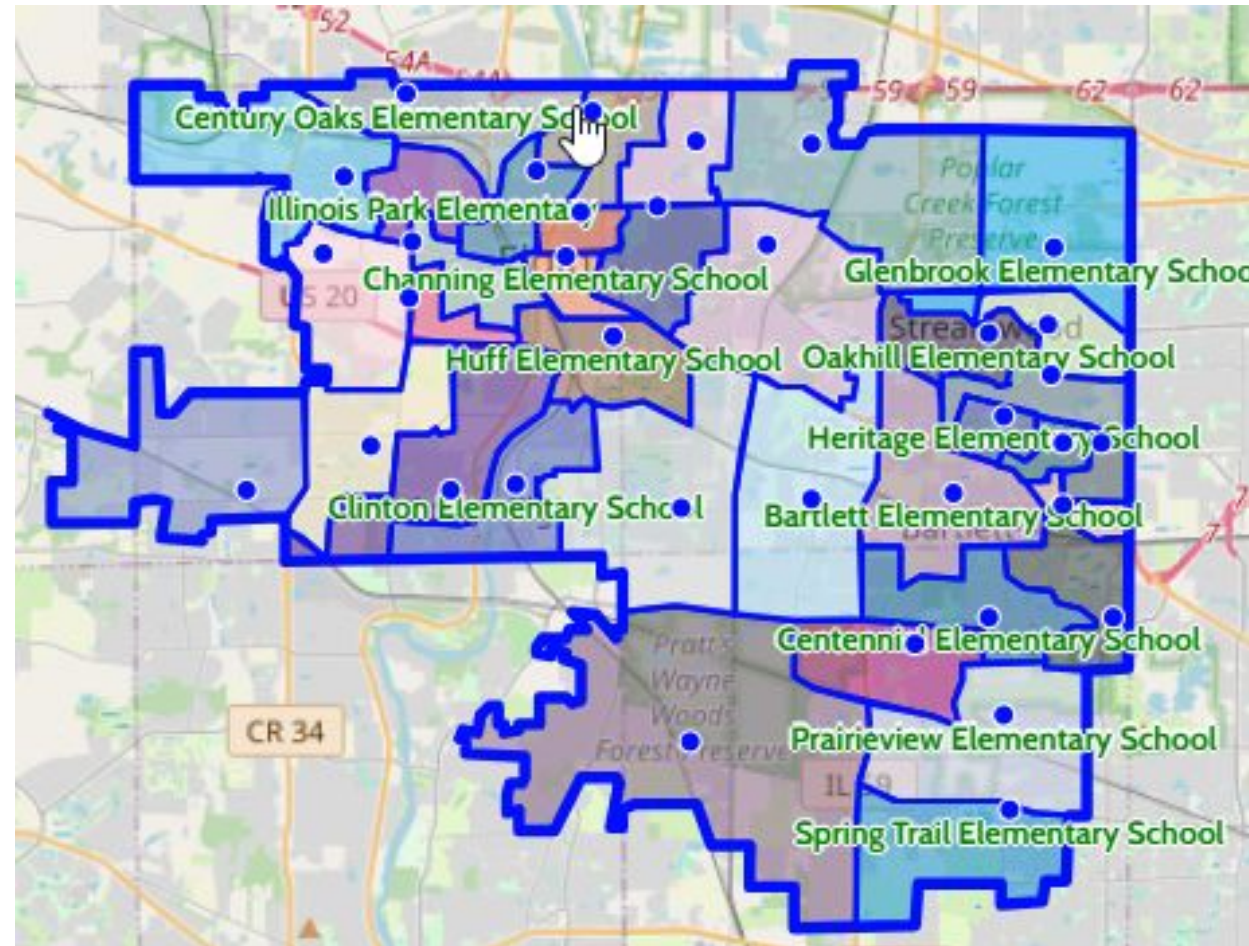




**April 14, 2025**  
**Facilities Update for Board of Education**

# Tonight's Update

- **Updated attendance boundary proposal**
  - Summary of proposal presented on March 24
  - Recommended adjustments to March 24 proposal
  - More details on Residency Exception Request process
  - Next steps



SCHOOL DISTRICT U-46

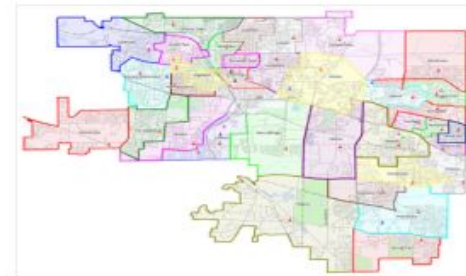


# Summary of proposal presented March 24, 2025

# Summary of Recommendations

## Unite U-46 Mapping Our Future Sessions

Below you will find the material made available during the session to review the preliminary boundary recommendations. These will be made available after each network session.



### Boundary Recommendations Update to the U-46 Board of Education on Feb. 24, 2025

- [Click here](#) for the *recorded* presentation
- [Click here](#) for a *copy* of the presentation
- [Click here](#) for *online boundary maps* that show both current and proposed boundaries. (Use the "Select School Year" dropdown to toggle between the two.)

### Preliminary Boundary Recommendations to the U-46 Board of Education on Dec. 9, 2024

- [Click here](#) for the *recorded* presentation.
- [Click here](#) for a *copy* of the presentation.
- [Click here](#) to view the *PDF maps* of the preliminary boundary recommendations.
- [Click here](#) to view the interactive map of the preliminary boundary recommendations (select from "Select School Year" dropdown menu "Proposed 2026-27")



# Elementary schools identified to be retired through Unite U-46

**McKinley  
1887**



**Washington 1893**



**Lowrie  
1887**



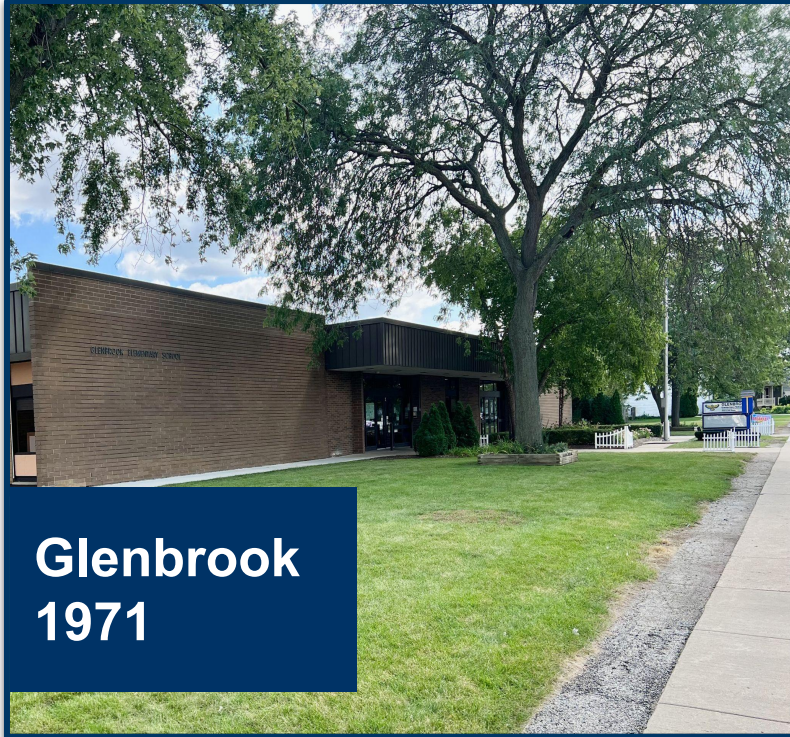
**Hanover  
Countryside 1954**



Retired when new  
school is ready -  
replaced with new  
building

Retired following the 2025-2026 school year

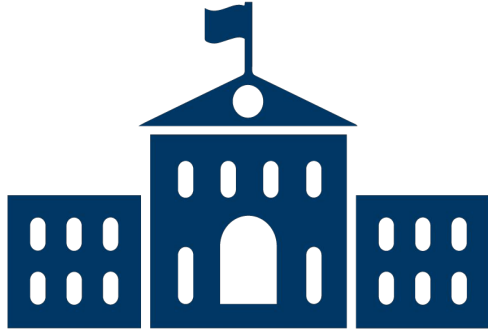
# Elementary schools identified to be addressed through Unite U-46



Additions, renovations underway. Will be completed during 26-27 school year.

Retired as early childhood center following 2025-2026 school year. Opens as elementary school for 2026-2027

# Option C for Shift of 6th Grade to Middle School



**2026-2027**

**New Middle School in Elgin**

*Under Construction*

6th Grade: Abbott\*

7th - 8th Grade: Ellis



**2027-2028**

**New Middle School in Elgin**

6th, 7th, and 8th Grade

**Ellis Closed**  
**Abbott Closed**

*\*Abbott would also keep its 8th graders in 2026-2027, eliminating an extra transition for these students. 6th and 7th grade students in Abbott attendance area will attend Kimball or Kenyon Woods.*



# March 24 adjustments to preliminary boundary recommendations

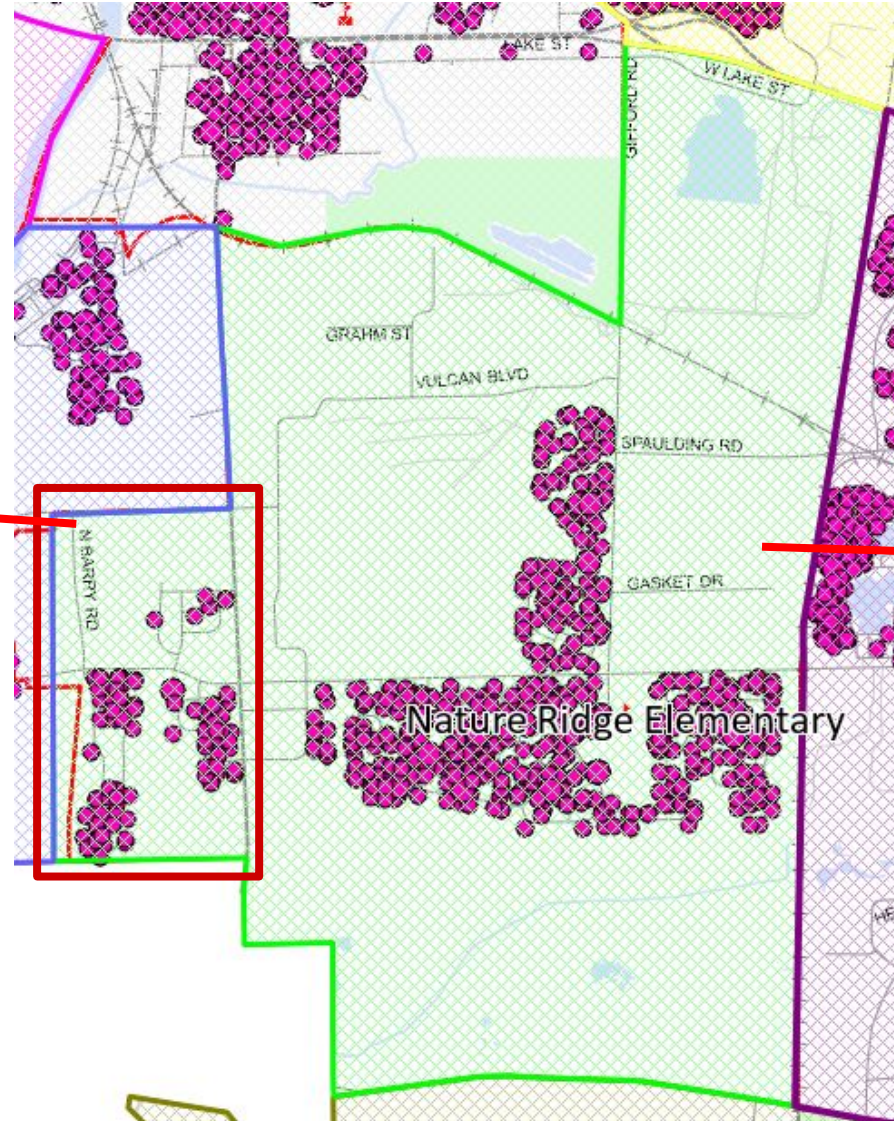
- Northern portions of proposed Bartlett Elementary\* and Liberty Elementary boundary moved to Canton, then Streamwood HS
- Alignment of Route 20 / Bluff City Boulevard boundary line
- Southern portion of new Elgin MS moved from SEHS to EHS
- Larkin “cutout” east of Fox River adjusted to Elgin HS
- Remove split of Highland ES going to Kenyon Woods MS
- Small change to BHS / SHS boundary on Chestnut Street in Hanover Park
- Correction to southeast corner of Horizon attendance area

*\*revision to this recommendation in tonight's proposal*



# Nature Ridge - Eastview feeder pattern

Kenyon Woods MS



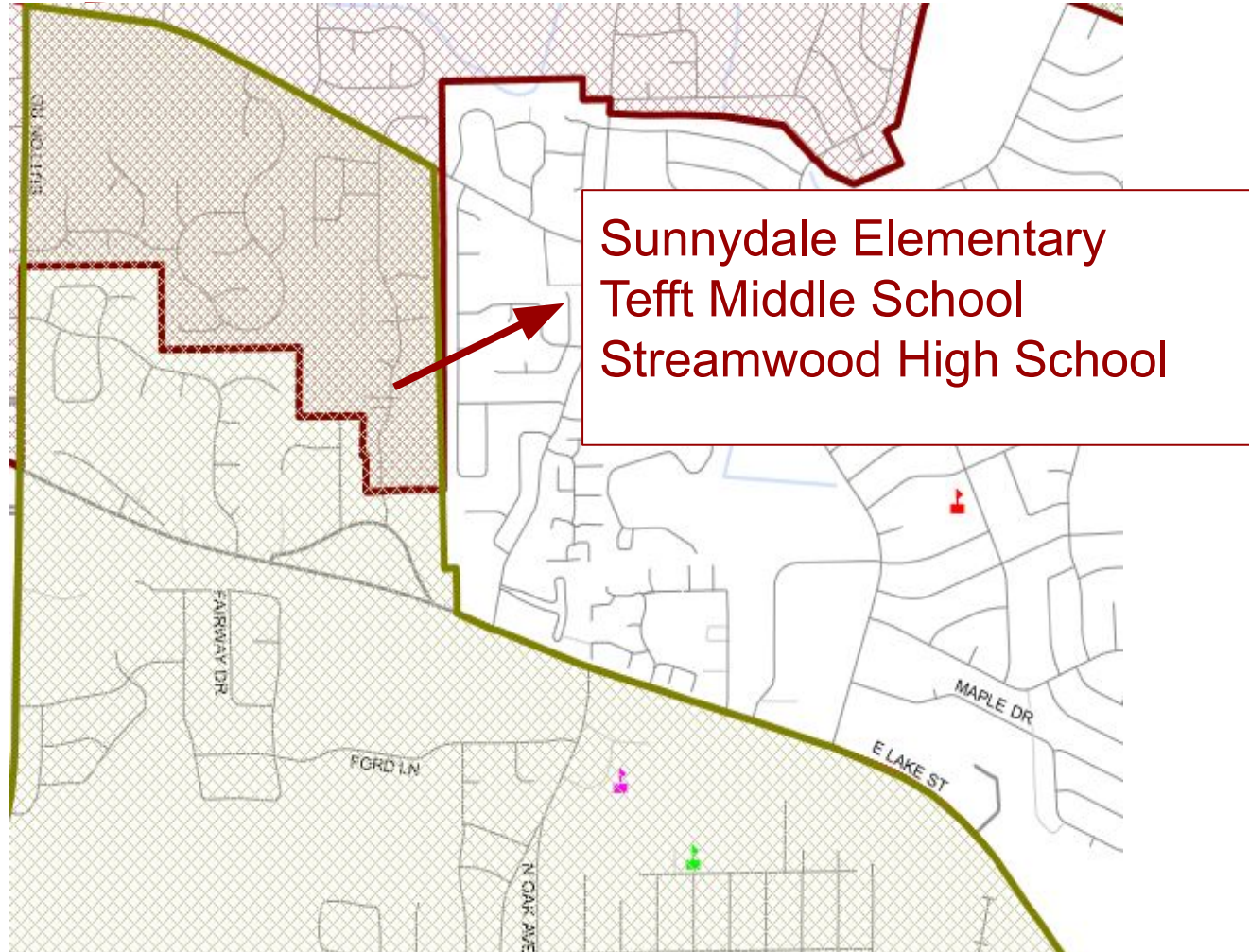
Eastview MS

SCHOOL DISTRICT U-46



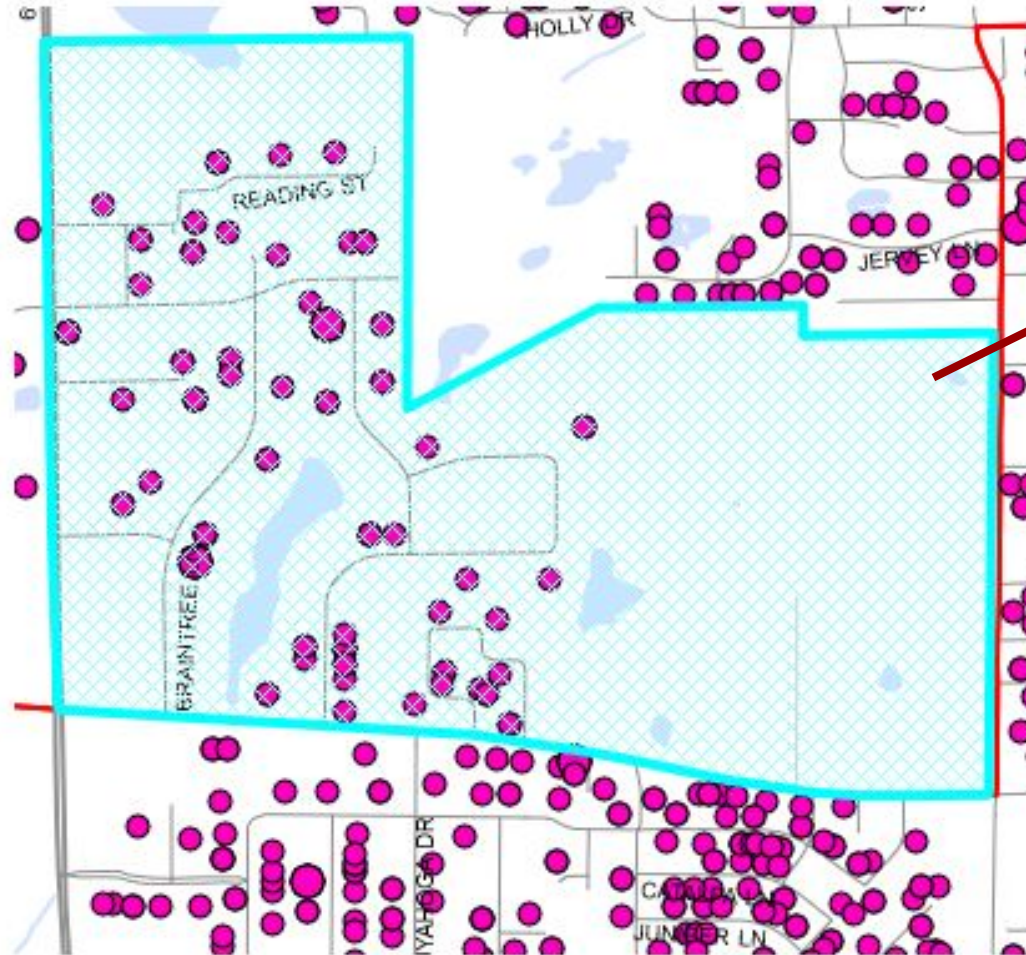
# Adjustments to March 24 proposal

# Adjustment to recommendation for the southern portion of Hanover Countryside





# Centennial Elementary School to attend Bartlett High School



Centennial Elementary  
Eastview Middle School  
Bartlett High School



SCHOOL DISTRICT U-46



# Next Steps

# Next Steps

- **Modify the current residency exception request process**
- **More details will be shared once boundaries are approved**
- **Anticipated deadline to submit request for 25-26 school year will be May 15**

## Residency Exception Request Form ----- Formulario para Solicitar una Excepción de Residencia

Residential Exception to Board Policy 7:30

Board Policy 7:30 requires that students attend the school within their attendance boundaries. A student's parent(s)/guardian(s) may request a transfer for their child to a District school other than the one assigned. A request should be directed to the District Residency Exception Committee, who, at their sole discretion, may grant the request, provided space is available, when the parent(s)/guardian(s) demonstrate that:

1. The student or parent presents exceptional physical or mental needs.
2. A majority of the student's curricular needs cannot be met in her/her attendance center.
3. A student's program placement creates a demonstrated familial burden.

All requests for attendance area exceptions noted above will be presented in writing by the parent/guardian with appropriate supportive documentation by completing a **Residency Exception Form**. Final decisions regarding such requests will be the responsibility of the District Residency Exception Committee. Please note that if a request is granted, the parent/guardian shall be responsible for transportation. Students may not transfer to schools that do not have attendance capacity or schools that have academic admission criteria if the transferring student does not meet those criteria (unless such a school is the only school to which the student could transfer).

Please allow up to two weeks for a decision from the District Residency Exception Committee which will be sent to your email.

# Next Steps

- **Schedule informational sessions in all impacted schools**
- **Plan systemwide transition events across U-46 sites**



SCHOOL DISTRICT U-46



# Timeline



# Transition Timeline

2024-2025

**Board of Education to vote on new boundaries on April 14**

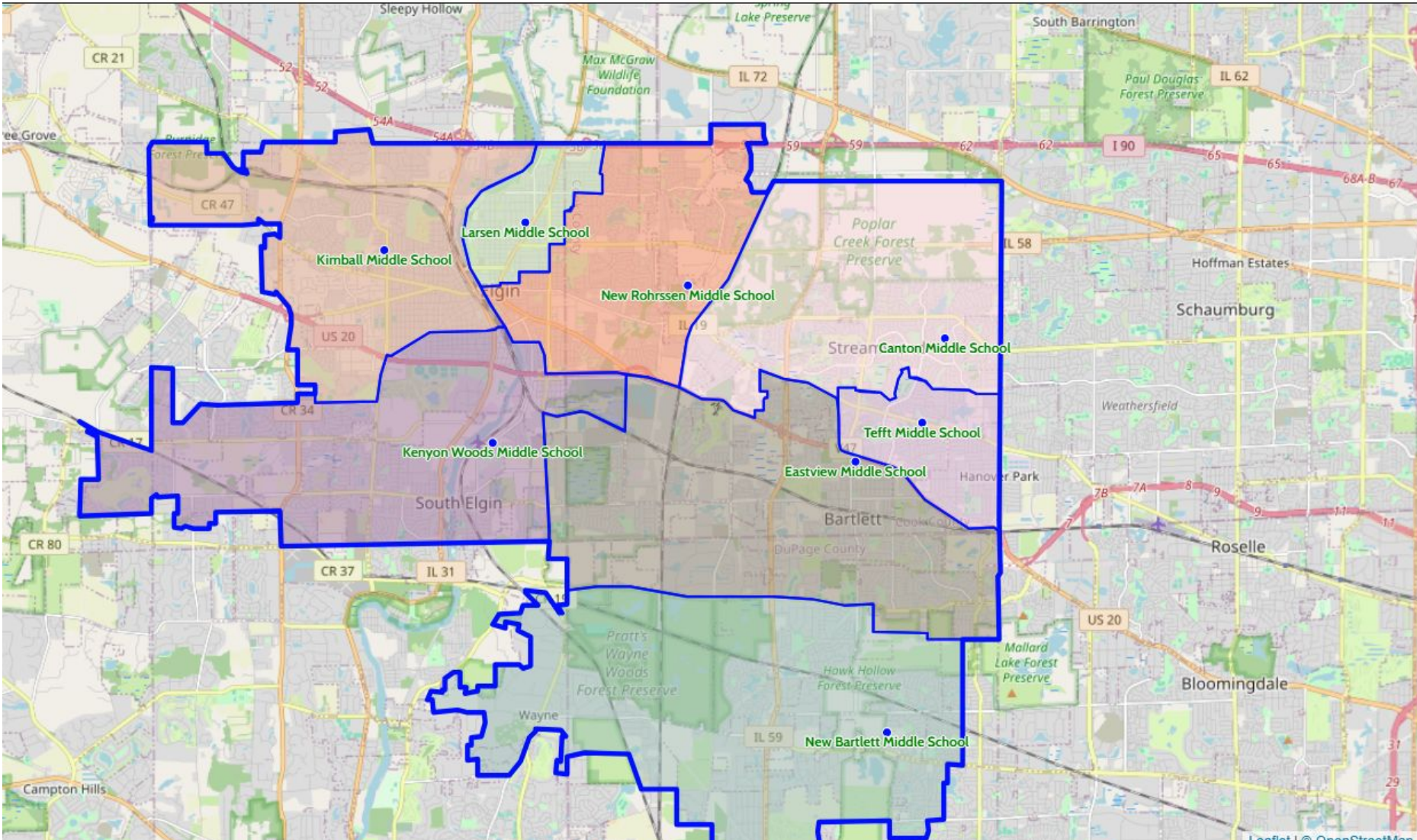
2025-2026

**Hawk Hollow Middle School opens for 7th grade only August 2025**

2026-2027

**New attendance boundaries take effect  
6th grade moves to middle school  
August 2026**

# Interactive online boundary map



Select School Year:

Proposed 2026-27

2024/25

Proposed 2026-27

Regular

Select Boundary:

Middle (6-8)

Notes:

For more information, click on a boundary or school name.

The proposed boundaries shown are the preliminary recommendations that were shared with the U-46 Board of Education on December 9, 2024. These attendance boundaries are pending approval by the Board of Education and would take effect in the 2026-2027 school year.

Disclaimer:

While every effort has been made to provide accurate and current information - should there be any discrepancy, Elgin School District U-46 has the final word.



# Next Steps

## SchoolLocator | Elgin School District U-46

### Choose School

School(s) that serve 101 - 545 CHICAGO ST EAST, ELGIN

New Search

Click on a school below to display that school's information on the right.

#### Elementary Current (2024-25)

▶ K - 6 Channing Elementary School

#### Elementary Proposed (2026-27)

▶ K - 6 Channing Elementary School

#### Middle Current (2024-25)

7 - 8 Ellis Middle School

#### Middle Proposed (2026-27)

6 - 8 New Rohrssen Middle School

#### High School Current (2024-25)

9 - 12 Elgin High School

#### High School Proposed (2026-27)

9 - 12 Elgin High School

### School Information

#### Channing Elementary School



Name	Channing Elementary School
Address	63 S. Channing St., Elgin, IL 60120
Principal	Rebecca Lunak
Phone	(847) 888-5185
Fax	(847) 888-7016
Web page	<a href="#">Channing Elementary School</a>
Start time	08:00 AM
Closing time	02:00 PM

SCHOOL DISTRICT U-46



**Thank You!**