





# Educational Pathways

## Board of Education Update 2022

---



## Purpose

---

Update the U-46 Board of Education on:

- Educational Pathways
- Streamwood High School  
Educational Pathways Facility  
Planning
- Magnet Academies



## Key Terms

---

- **Educational Pathway –**  
A strategically planned sequence of career oriented courses paired with required general education courses that leads directly to a post-secondary plan.
- **Magnet Academy –**  
A theme-based school within a school which creates a small learning community for students who select a focus in 8th grade.



## Key Terms Continued

---

- **College and Career Pathway Endorsement (CCPE) –**

This is a component of the Postsecondary Workforce Readiness Act. Based on feedback from many stakeholders the CCPE was developed as a way to specify the metrics that defined college and career readiness:

- Developing a career plan
- Completing a series of career oriented courses leading to a post secondary credential
- Earning 6 hours of college
- On track in ELA and Math
- Career Exploration and work based learning experience including team based challenges.

- **Model Program of Study –**

State developed sequence of courses for secondary and post-secondary planning for high wage/ high demand careers.



# Guidance for Educational Pathway Development:

---



- Postsecondary Workforce Readiness Act
  - ISBE College and Career Pathway Endorsements
- State of Illinois Model Programs of Study
- Alliance for College and Career Success (ACCSS)
  - Ed Systems

## Guidance for Educational Pathway Development:

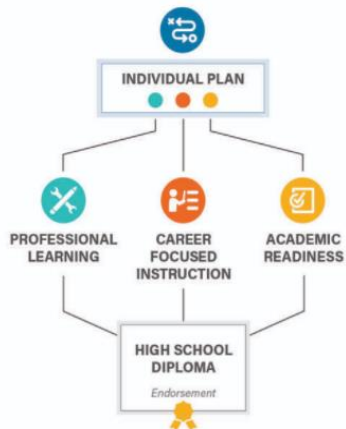
---

- Leads to a high skill, high demand, living wage occupation
- Two-three Sequential career-based courses
- General education courses that are structured to college and career readiness
- Meaningful career exploration activities
- Early College Credentials
- Industry Credential opportunities
- Work-based learning opportunities
- On-time graduation
- Ready to enter a post-secondary institution on pace in Math and ELA
- Supportive student organizations

# College and Career Pathway Endorsement (CCPE)



## College and Career Pathway Endorsement Framework



### INDIVIDUAL PLAN

Each student completing an endorsement must have an individualized plan, which includes college planning linked to early understanding of career goals, financial aid, resume, and personal statement.

### PROFESSIONAL LEARNING

Awareness, exploration, and preparation activities that provide opportunities for students to interact with adults in their workplace

9th	10th	11th	12th
At least 2 career exploration activities or 1 intensive experience		60 cumulative hours of paid or credit supervised career development experience with a professional skills assessment	
At least 2 team-based challenges with adult mentoring			

Through these experiences, a student gains essential employability and technical competencies in their identified sector.

### CAREER-FOCUSED INSTRUCTIONAL SEQUENCE

Two years of secondary coursework, or equivalent competencies, that articulate to a postsecondary credential with labor market value. Must include at least 6 hours of early college credit.

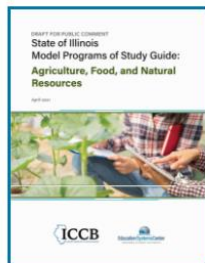
9th	10th	11th	12th
Orientation / Introduction			
		Skill Development	
		Capstone / Advanced Courses	

### ACADEMIC READINESS

Ready for non-remedial coursework in reading and math by high school graduation through criteria defined by district and local community college



# State-Endorsed Model Programs of Study



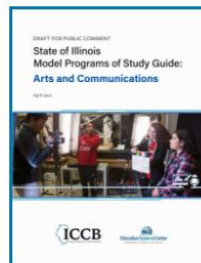
**Guide:** Agriculture, Food, and Natural Resources

**Diagram:** Agriculture, Food, and Natural Resources



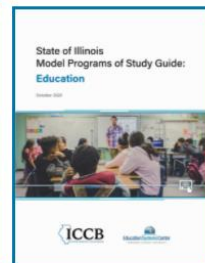
**Guide:** Architecture, Construction, and Energy

**Diagram:** Architecture, Construction, and Energy



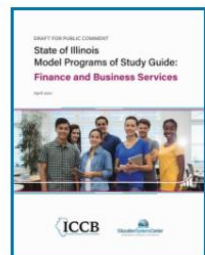
**Guide:** Arts and Communications

**Diagram:** Arts and Communications



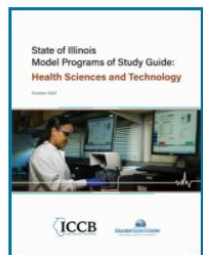
**Guide:** Education

**Diagram:** Education



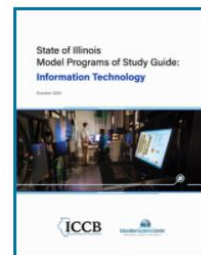
**Guide:** Finance and Business Services

**Diagram:** Finance and Business Services



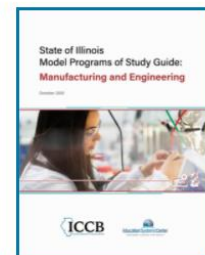
**Guide:** Health Sciences and Technology

**Diagram:** Health Sciences and Technology



**Guide:** Information Technology

**Diagram:** Information Technology



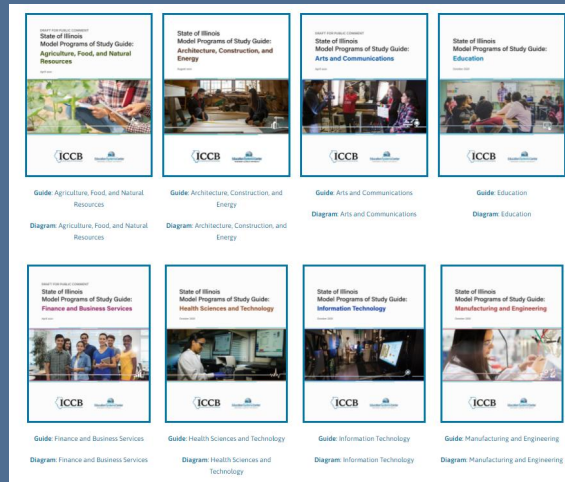
**Guide:** Manufacturing and Engineering

**Diagram:** Manufacturing and Engineering

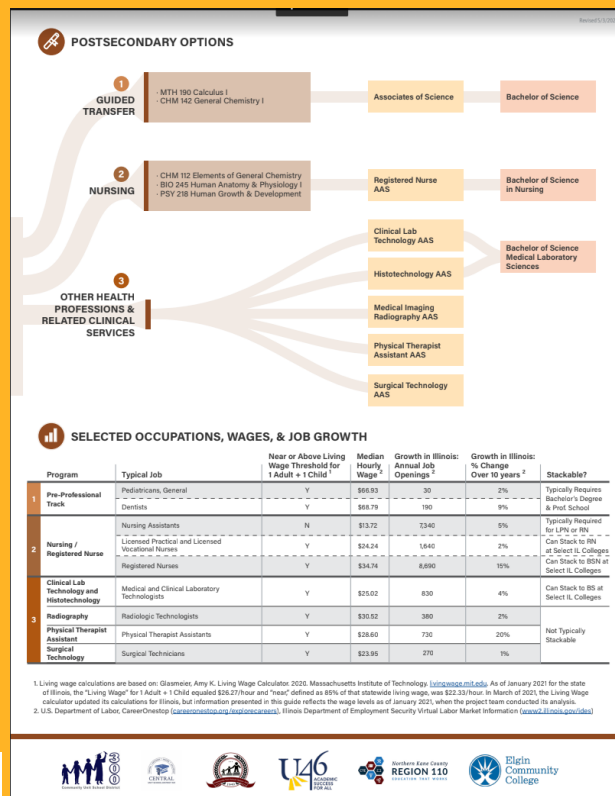
# State-Endorsed Model Programs of Study

The primary purposes and goals for the Model Programs of Study are to:

1. Provide guidance and exemplars for local programs to adopt or customize as they develop programs of study for approval as part of the Perkins V Plan.
2. Establish a framework for State agencies to develop and implement program supports.
3. Identify priority Dual Credit courses that are foundational to the industry area and well-situated for statewide scaling and articulation.
4. Define the competencies that should be integrated across a program of study and sequential courses to prepare students for the future of work in that industry area.
5. Identify entry points for employers to support coursework and related experiences.



# Regional Model Program of Study Example:



## Metrics

---

- ISBE College and Career Readiness Indicators (CCRI):
  - Career Development Experience (Internships)
  - Industry Credentials
  - Pathway Dual Credit
  - Co-Curricular Activities
- Post-Secondary placement
- College and Career Pathway Endorsement (CCPE)



## Implementation

---

- Five Educational Pathways will be implemented at each of our high schools.
- One Magnet Academy will remain at each high school.





# Previous Academies and Updated Pathways

**Business Academy**

**Finance, Business, and IT  
Pathway (Includes Hospitality)**

**Fine Arts Academy**

**Arts and Communication Pathway**

**Human Services Academy**

**Health, Human Services, and Public  
Service Pathway (Includes Education)**

**STEM Academy**

**Manufacturing, Engineering,  
Technology, and Trades Pathway**

**Liberal Arts Academy**

**Multidisciplinary Pathway**

# Educational Pathways Five Year Plan

---

Year	School/District Wide	Capital Update(s)	Curriculum Update(s)
Summer 2022	<ul style="list-style-type: none"> <li>- Streamwood HS (Capital Updates)</li> <li>- District Wide (Internship Pilot)</li> </ul>	SHS Phase 1 Renovation: Business Incubator AVID Early Childhood Healthcare Sciences Cafeteria/Commons Walls Courtroom Science Labs	- Internship Pilot (District Wide) - Will be reviewed to determine systems needed for ongoing implementation and support
SY 2022-2023	<ul style="list-style-type: none"> <li>- Streamwood HS and Bartlett HS (Capital Updates)</li> <li>- District Wide and Elgin HS (Curriculum Updates)</li> </ul>	Review of SHS Phase 1 - Planning for BHS Phase 1 and SHS Phase 2	<ul style="list-style-type: none"> <li>- Pathways Supplemental Resources</li> <li>- CNA Dual Credit</li> <li>- CCPE Implementation</li> <li>- Ongoing review of BHS Academy Math courses and science courses</li> </ul>
Summer 2023	<ul style="list-style-type: none"> <li>- Streamwood HS</li> <li>- Bartlett HS</li> </ul>	<ul style="list-style-type: none"> <li>- SHS Phase 2 Renovation: Culinary Arts</li> <li>Automotive PLTW</li> <li>Locker Removal/Repurposing of Space</li> <li>- BHS Phase 1: Electrical, ventilation, automotive area</li> </ul>	- Year II of Internship Implementation (District Wide)



# Educational Pathways Five Year Plan

---

Year	School/District Wide	Capital Update(s)	Curriculum Update(s)
SY 2023-24	- Bartlett HS, Elgin HS, South Elgin HS, Streamwood HS		<ul style="list-style-type: none"> <li>- Precision Manufacturing, Automotive Technology (Diesel Engines and Green Energy), Welding Dual Credit and CCPE Implementation</li> <li>- SHS LEAD: Venture Entrepreneurship, Social Entrepreneurship</li> <li>- Curriculum Writing for IB course groupings: Language and Literature, Language Acquisition, Individuals and Society, Science, Math, Arts</li> </ul>
Summer 2024	- Bartlett HS	- Phase 2: Academy Instructional Spaces and other areas as identified	
SY 2024-25	- District Wide		<ul style="list-style-type: none"> <li>- Business, Culinary Arts, Informational Technology, Dual Credit</li> <li>- Continuing IB Curriculum Writing</li> </ul>



# Educational Pathways Five Year Plan

---

Year	School/District Wide	Capital Update(s)	Curriculum Update(s)
SY 2025-26	Elgin HS	<ul style="list-style-type: none"> <li>- Number of phases TBD: Science labs, technology labs, art instruction, student collaboration spaces</li> <li>- Additional needs to be identified in alignment with Capital/Facilities Plan</li> </ul>	<ul style="list-style-type: none"> <li>- Continuing IB Curriculum Writing</li> </ul>
SY 2026-27	South Elgin HS	<ul style="list-style-type: none"> <li>- Number of phases TBD: Manufacturing spaces, academy spaces</li> <li>- Additional needs to be identified in alignment with Capital/Facilities Plan</li> </ul>	<ul style="list-style-type: none"> <li>- Additional updates to be determined in alignment with the Updated Seven Year Curriculum Writing Plan</li> </ul>





# Larkin High School Pathways Update

---





# Larkin High School Pathways Update

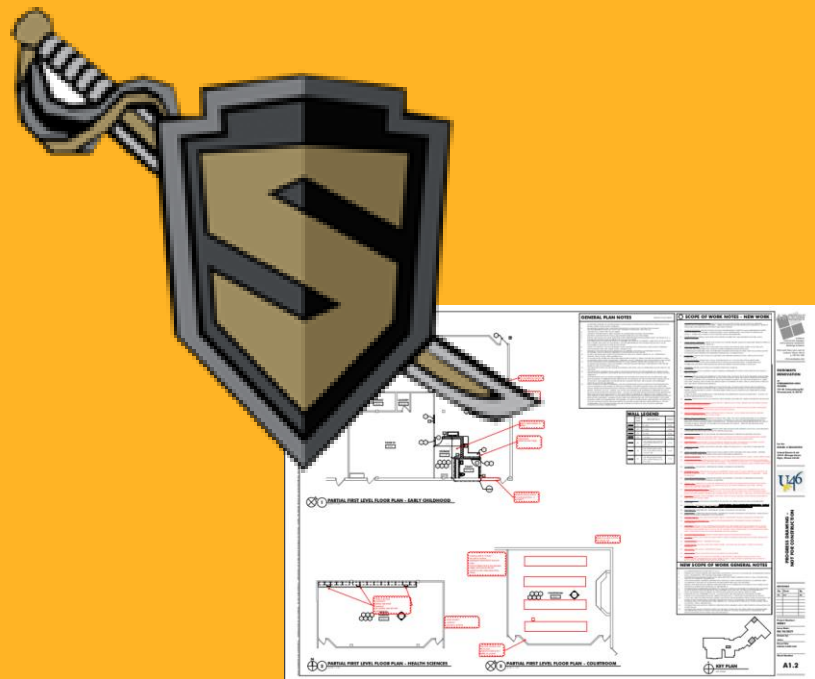


# Larkin High School Pathways Update



# Larkin High School Pathways Update





# Streamwood High School Pathways Update

---

# INCubatoredu Pitch Night







# Magnet Academies

---

# Beacon Academy Update South Elgin High School

- Earned Magnet Schools of America  
“Demonstration School” status. This means  
they *exceeded* the certification standards in most  
areas.



# Beacon Academy Update South Elgin High School



# Beacon Academy Update South Elgin High School





# Beacon Academy Update South Elgin High School





## Theme Transition Updates

All students currently enrolled in a Magnet Academy the Academy will complete their normal series of courses. The 2022-2023 cohort will participate in the new offerings pending approval.

- Elgin HS: Gifted and Talented Academy – International Baccalaureate Candidate Academy
- Streamwood HS: World Language and International Studies Academy– **LEAD**: Leadership, Entrepreneurship, Action, and Design.

# Magnet Academies



STEM Academy: Science, Engineering, and Technology Academy

Gifted and Talented Academy → International Baccalaureate Candidate Academy



Visual and Performing Arts Academy

Beacon Academy of Media and Digital Arts



World Languages and International Studies Academy → LEAD Academy

## Certification Work

- Magnet Schools of America (MSA) Certification:
  - Bartlett STEM
  - Larkin VPAA
  - Streamwood LEAD/WLISA

MSA Standards of Excellence



- International Baccalaureate Certification:
  - Gifted and Talented Academy

International Baccalaureate Diploma Programme

## Next Steps

- Curriculum writing for the Pathways and Magnet Academies in alignment with updated seven year Curriculum Writing Plan
  - BOE Curriculum Proposals
  - BOE Resource Proposals
- Capital update planning with the Operations Team in alignment with the Facilities Enhancement Plan
- Budget planning with the Financial Services Team
- BOE Pathways and Magnet Academy Update Spring 2023

A man with glasses is looking down at a smartphone in his hands. He is wearing a dark t-shirt and a watch. The background is a brick wall. The entire image is overlaid with a semi-transparent blue filter.

Thank you

N  
ACTI