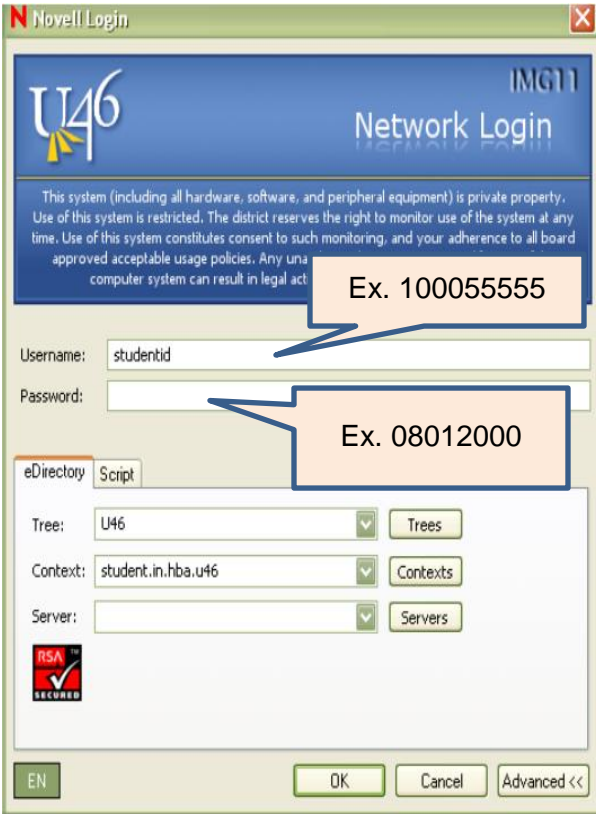
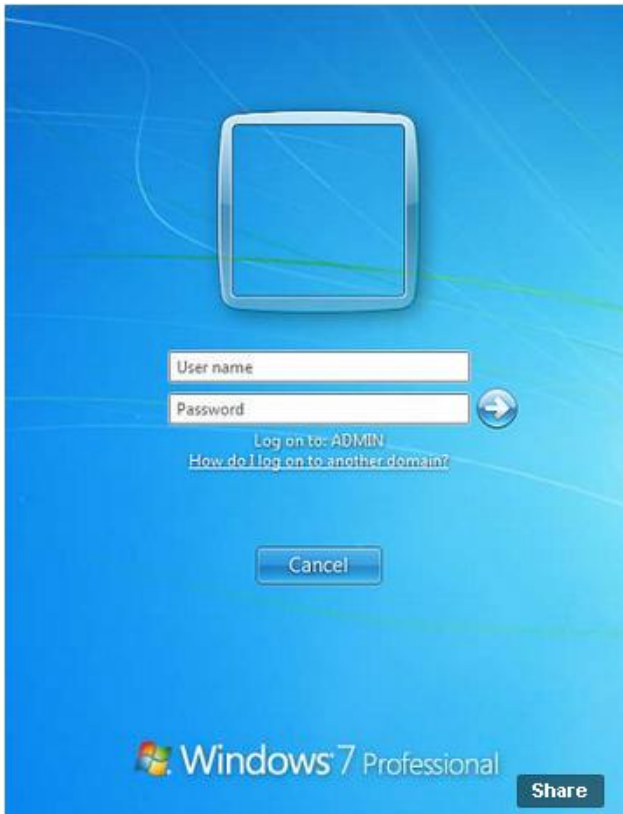


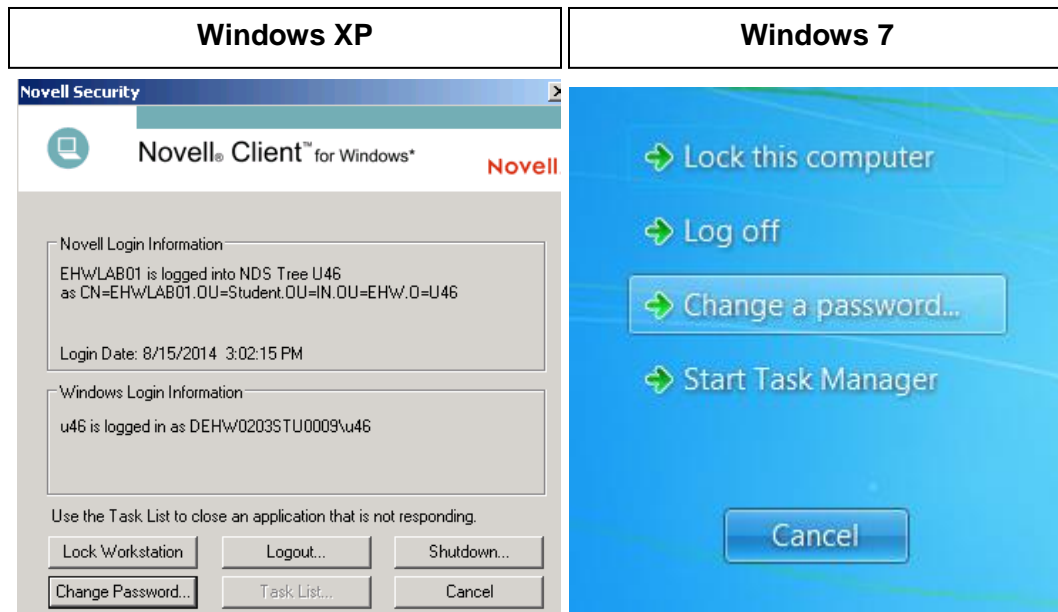
Updated student login procedure

This year, we are asking all students to log in to the U-46 network using their own credentials. Each student will log in using their student ID for their username and their date-of-birth (MMDDYYYY) for their password. See example below for student with ID number of 100055555 and birthdate of August 1, 2000.

Windows XP	Windows 7
	

After logging in for the first time, the student will have the option to change their password by pressing Ctrl + Alt + Delete buttons at the same time on the keyboard.

Click 'Change password':



You should now see the Change Password screen. From here, you will need to re-enter your old password, followed by your new password in both the “new password” field and “confirm password” field.

We are working now to establish Google accounts for students as well. The passwords the students set here will be synced to their Google accounts. Please look for additional details next week.